

# AUGUST 7, 2010

## Cougar Mountain bike Climb for Cancer

### Issaquah, Washington



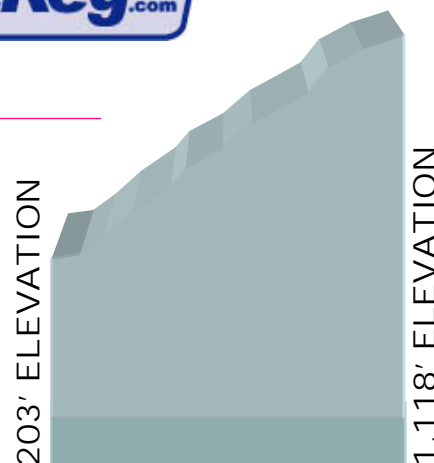
#### REGISTRATION & ENTRY

- Registration is FREE; please register early at [www.BikeReg.com](http://www.BikeReg.com) (search for "Cougar").
- Day of event registration is okay.
- In lieu of entry fees, optional donations are appreciated.



#### DESCRIPTION: TIME-TRIAL

- ~2 mile individual time-trial.
- 7.2% average gradient (L'Alpe D'Huez is 7.9%).
- First rider goes off at 9:01 am.
- Race numbers will be assigned per registration.
- Race number indicates start time (e.g. #42 equals start time of 9:42 am).
- Start – one block up SE 54th from NW Newport Way.
- Finish – 100 meters before SE 60th and Cougar Mountain Drive.
- Course record: 11:34 (Lang Reynolds, 2006).



#### CANCER FACTS

- >10 million Americans are currently living with, through, or beyond cancer.
- >1.3 million people in the U.S. will be diagnosed with cancer this year.
- 1 in 3 people will be diagnosed with cancer in their lifetime.
- 3 in 4 families will care for a family member with cancer.

#### DONATIONS

- Donations are accepted on day of event or online at any time.

**FRED HUTCHINSON**  
CANCER RESEARCH CENTER



Fred Hutchinson Cancer Research Center  
UW Medicine  
Children's Hospital & Regional Medical Center

Race Director – Joel M. Blatt | 425.246.6699 | [climb4cancer@yahoo.com](mailto:climb4cancer@yahoo.com)  
[www.climb4cancer.net](http://www.climb4cancer.net)